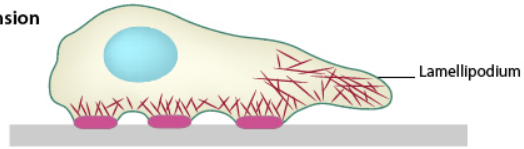


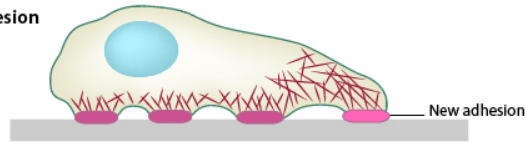
# Cell migration

# Four step cycle

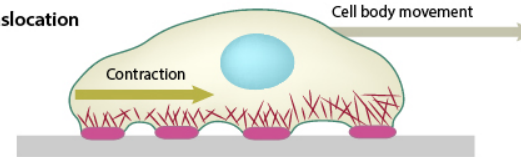
1. Extension



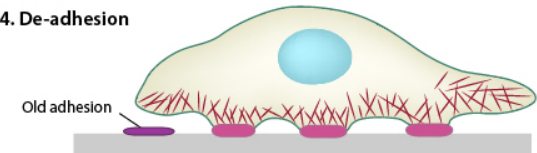
2. Adhesion



3. Translocation



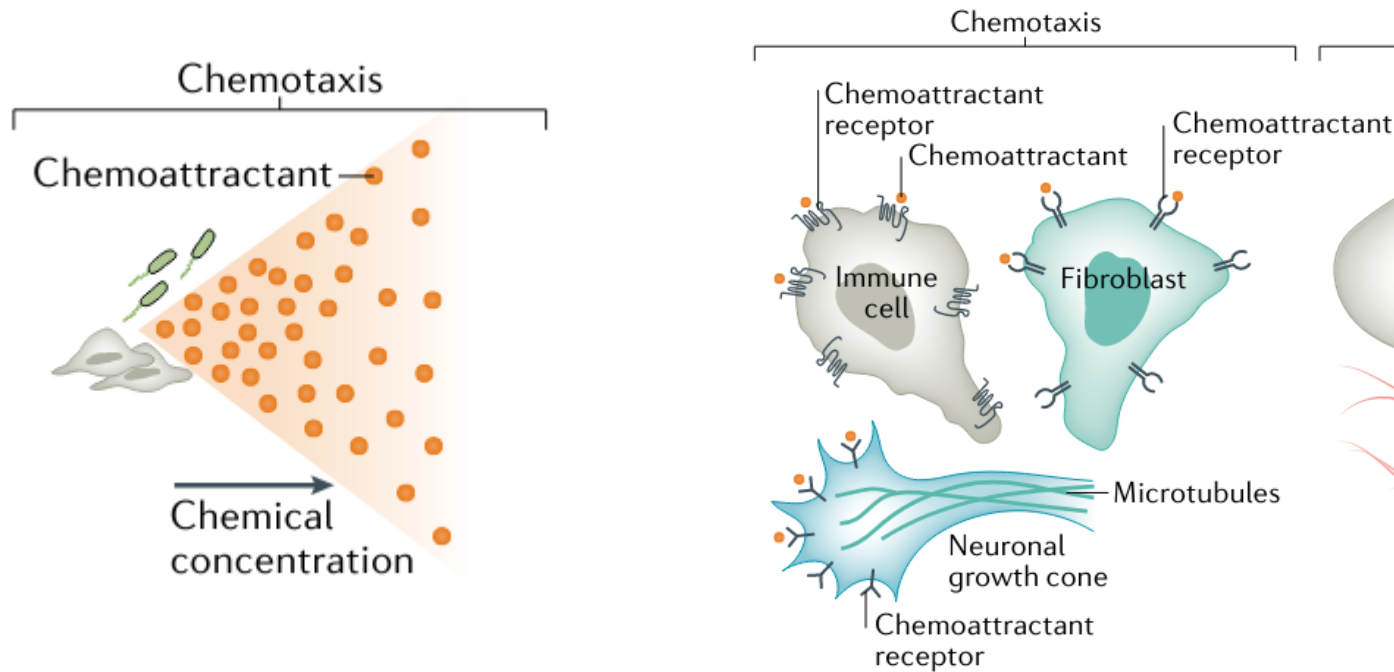
4. De-adhesion



Mesenchymal mode

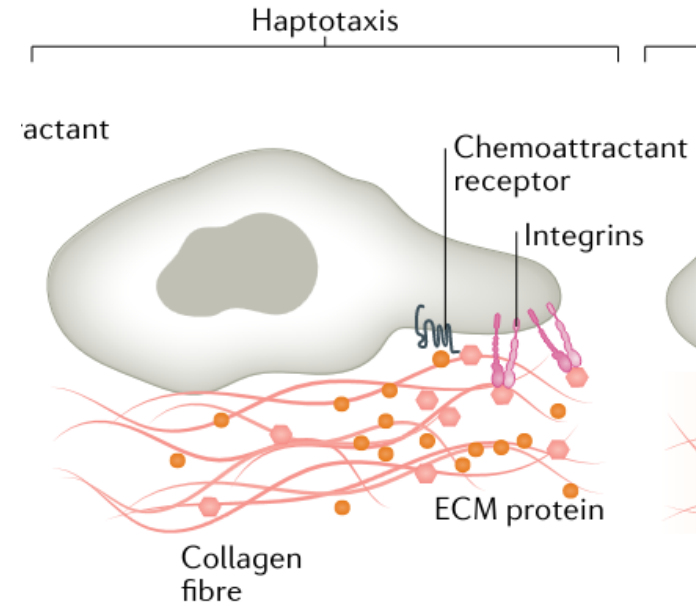
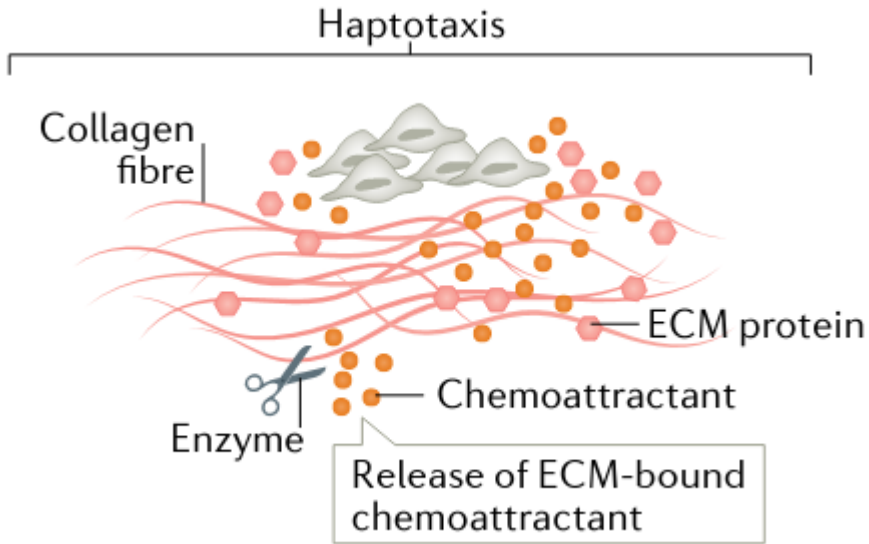
# Signals for migration

- **Chemotaxis** – in the presence of gradient of diffusible biochemical signals



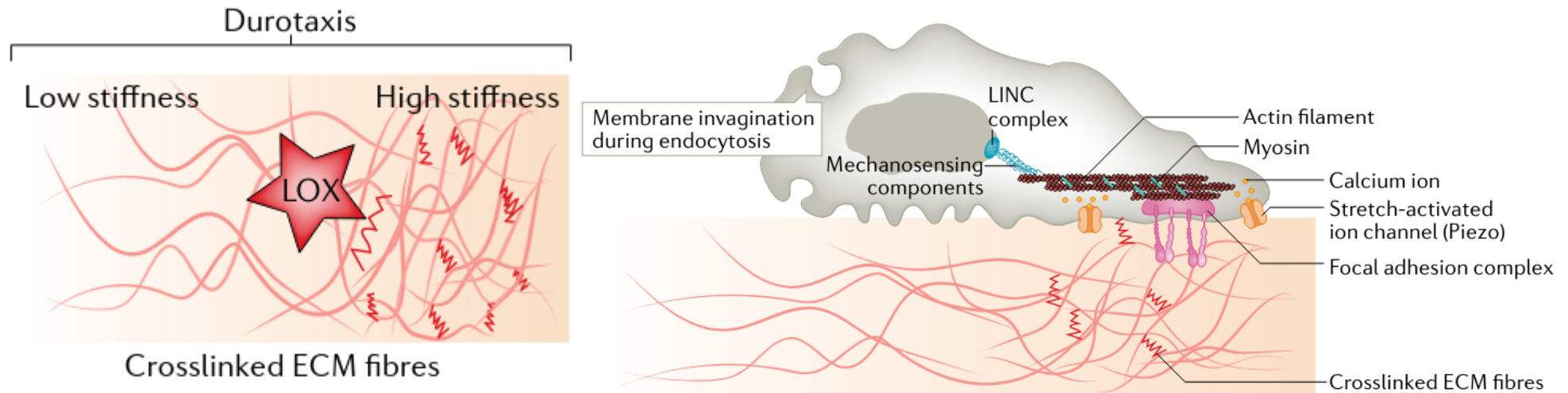
# Signals for migration

**Haptotaxis** – in the presence of surface bound biochemical signals



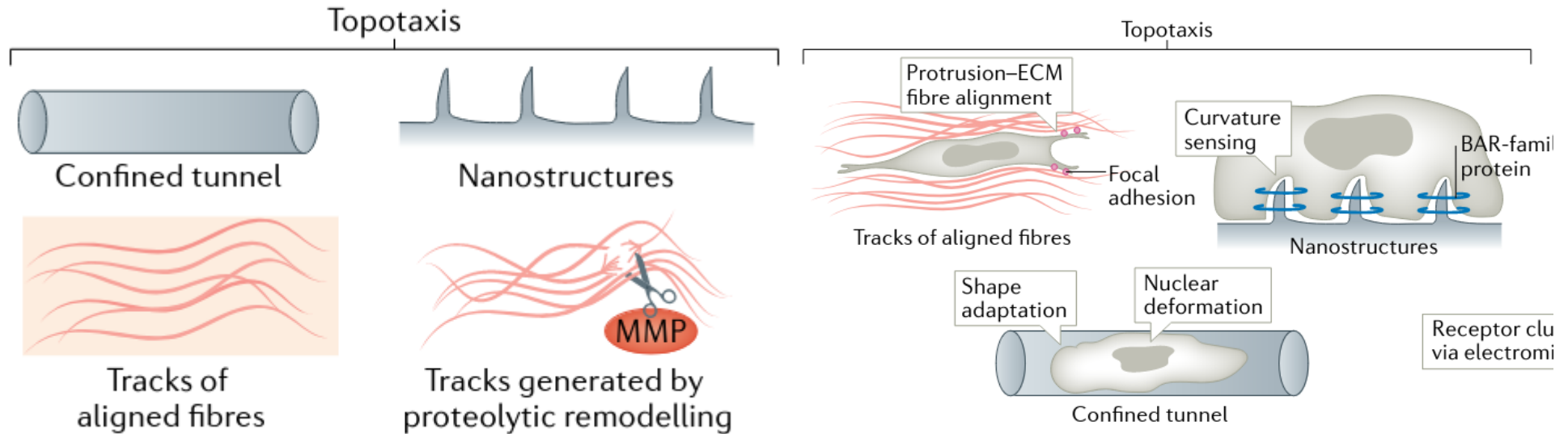
# Signals for migration

**Durotaxis** – in the presence of stiffness gradient of the substrate



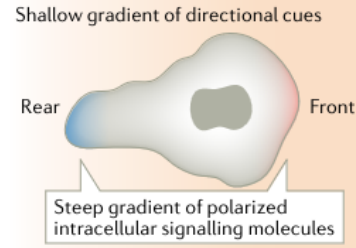
# Signals for migration

**Topotaxis** – by sensing topographical cues in the environment

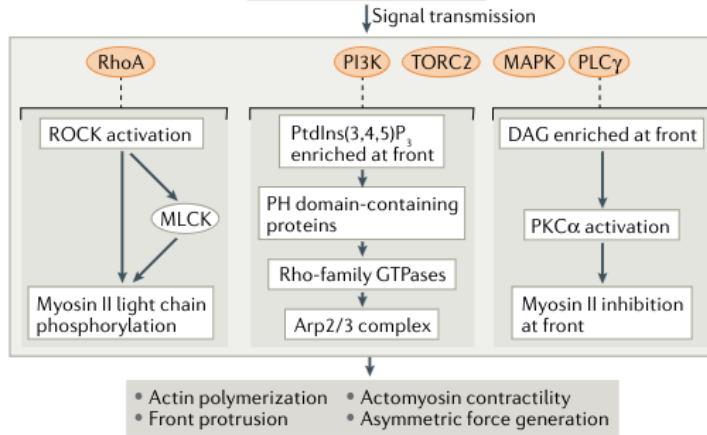


# Signal transduction

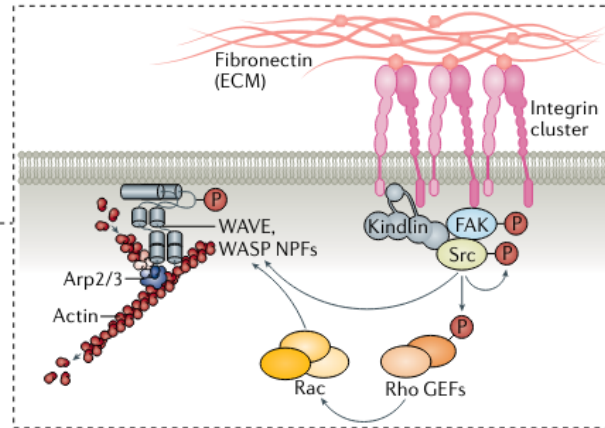
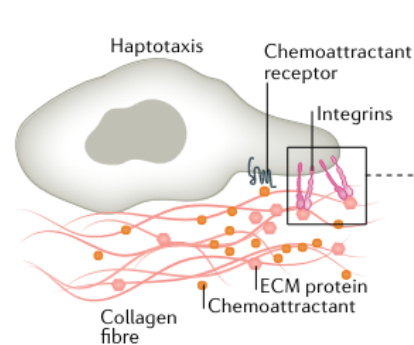
## a Polarization of intracellular signalling molecules



## b Signal transmission



## c Signalling pathways triggered by haptotactic cues



# Movement

